

TARGET 36

UTILITY/STANDBY VESSEL

GENERAL DATA

LOA:	36.00m
Breath:	10.97 m
Depth / Draft:	5.00 m / 4.2m
GRT / NRT:	448 /134 tons
Registry:	Kuching
Built:	2006
Official Number:	329726
Call Sign:	9WGB4
MMSI Number:	533636000
Classification:	Nippon Kaiji Kyokai
Bollard Pull:	30.12 tons

MAIN ENGINE / GENERATOR

Main Engine:	2 x 1600HP,2387kW 1600 bhp @ 850 rpm. Yanmar
Main Generator:	2 x Cummins 4BT3.9 - G(M) 78 kW/415V/50 Hz/1500rpm
Gear Box:	2 x Reinjes YX20koc Ratio 2.84:1
Propulsion:	2 x Fixed propeller
Max Speed:	Approx. 10 knots
Consumption:	230 liters/ hour

DECK EQUIPMENT

Towing Winch:	Single Drum Hydraulic Winch 30 tons @ 1st layer / 100 tons brake
Anchor Windlass:	1.5 tons electro hydraulic
Anchor:	2 x Stockless anchor 480 kg
Wire Rope:	Tow wire: 38 mm x 800 m

SAFETY EQUIPMENT

Fire Fighting:	Fire/GS Pump In compliance with Class requirement
Life Rafts:	2 x 15 men self-inflatable
Life Jackets:	40 units

OTHER INFORMATION

Deck Space:	72 m ²
Deck Strength:	5 tons / m ²



NAVIGATION / COMMUNICATION EQUIPMENT

Radar:	Furuno Radar, Model FR-1715
Echo Sounder:	Furuno Echo Sounder
GPS:	Furuno GPS
Compass:	Magnetic type-Daiko Keiki
Sat Phone/ Fax/ Email Comm:	NSSL-FBB
Inmarsat C:	Furuno Model Felcom.15
SSB:	Furuno FS-1503
AIS:	Samyung Model N50
VHF:	GX 1000S Samyung 2 x portable Model STR-6000A

Navtex:	Furuno
EPIRB:	Kannad Marine
SART:	Furuno
PA System:	Jotron-1605

TANK CAPACITY

Fuel Oil:	270 m ³
Fresh Water:	63 m ³
Lube Oil:	4.2 m ³
Dirty Oil:	2.4 m ³

Endurance	Approx. 25 days
-----------	-----------------

ACCOMMODATION

Single Cabin:	2 units
Twin Cabin:	3 units
4 Men Cabin:	2 units
Total:	16 men

Last updated on 25th July 2018

Particulars given herein are without warranty as to accuracy and interest parties must satisfy themselves by inspection or other means of details of the vessel.

AN NUR
MARINE SERVICES
(M) SDN BHD



UKAS ISO 9001:2015 CERTIFIED BY BUREAU VERITAS

AN NUR MARINE SERVICES(M) SDN BHD

WISMA AN NUR, NO. 13A, JALAN UTAMA SURIA TROPIKA 1, SURIA TROPIKA, 43300 SERI KEMBANGAN, SELANGOR DARUL EHSAN, MALAYSIA.

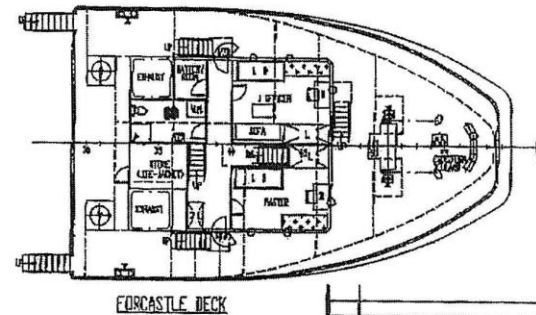
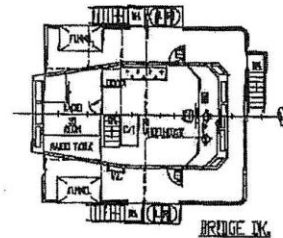
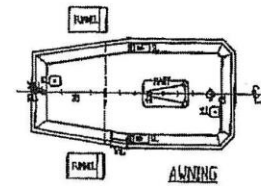
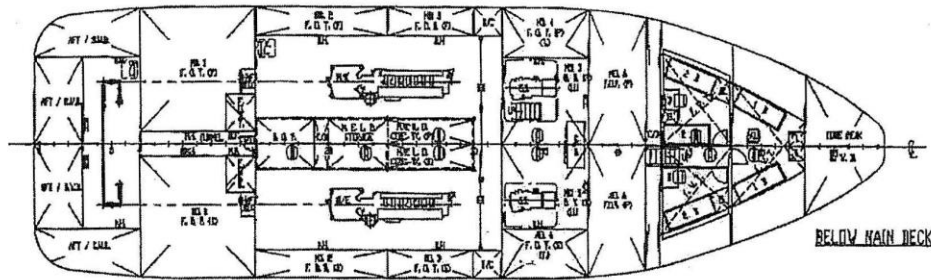
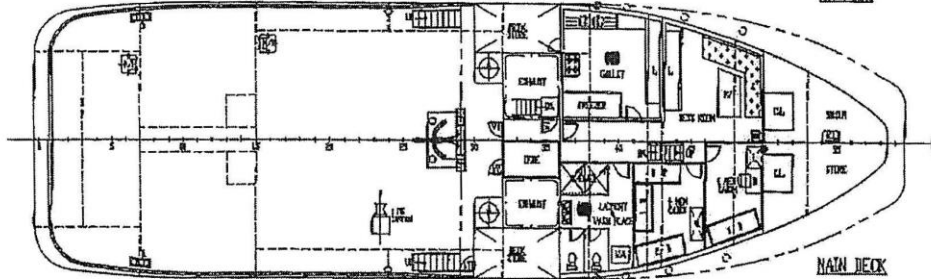
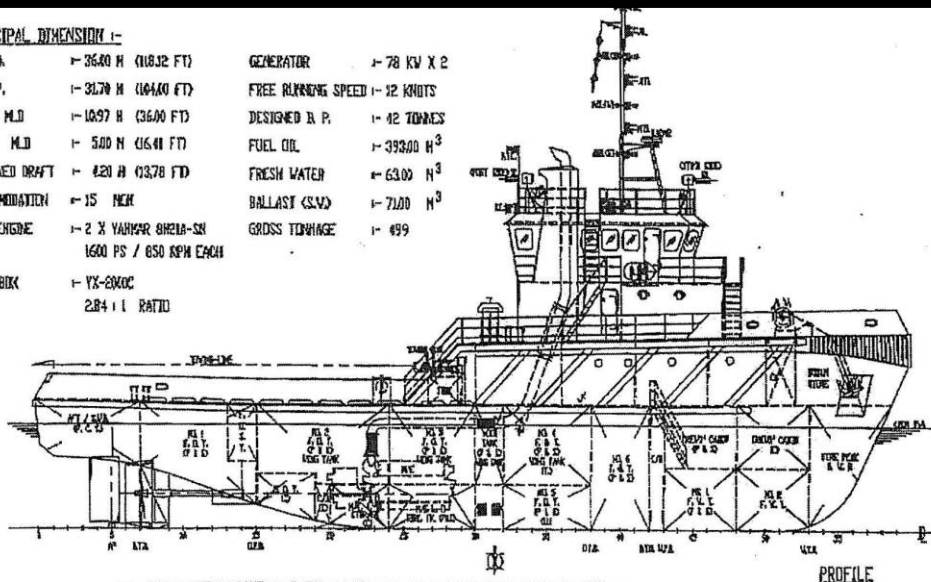
TEL: +60389385111 / FAX: +60389389393 / EMAIL: info@annurmarine.com

GENERAL ARRANGEMENT

TARGET 36

PRINCIPAL DIMENSION 1-

L. D. A.	→ 36.00 M (118.32 FT)	GENERATOR	→ 78 KW X 2
L. D. P.	→ 31.70 M (104.00 FT)	FREE RUNNING SPEED	→ 12 KNOTS
BEAM MLD	→ 10.97 M (36.00 FT)	DESIGNED R.P.	→ 42 TONNES
DEPTH MLD	→ 5.00 M (16.41 FT)	FUEL OIL	→ 39300 M ³
DESIGNED DRAFT	→ 4.20 M (13.78 FT)	FRESH WATER	→ 6300 M ³
ACCOMMODATION	→ 15 MEN	BALLAST (SSW)	→ 7100 M ³
MAIN ENGINE	→ 2 X YANMAR SHETA-SH 1600 PS / 650 RPM EACH	GROSS TONNAGE	→ 499
GEAR BOX	→ YX-200C 2.84 : 1 RATIO		



NOTE:
 (A) 1/4" PLATE BETWEEN FIT. AND ACC. DE.
 TO BE COVERED BY DECORATIVE MATERIALS.

This drawing and the information contained herein is supplied on the understanding that they are the exclusive property of MENAG'S SHIPBUILDING CONTRACTOR & DESIGNER S/P. They must not be used or reproduced in whole or in part without permission in writing.

DATE	REVISION	REV. BY
DESIGNER		
MENAG'S SHIPBUILDING CONTRACTOR & DESIGNER S/P GRAVAL ARCHITECT TEL: 03-2222222, 2222222, 2222222, 2222222, 2222222, 2222222 1ST FLOOR, 10, LINDEN, JONG KONG, 50000 2ND FLOOR, 10, LINDEN, JONG KONG, 50000 3RD FLOOR, 10, LINDEN, JONG KONG, 50000 4TH FLOOR, 10, LINDEN, JONG KONG, 50000		
SHIP	36M T. S. TUG	
TITLE	GENERAL ARRANGEMENT	
WELDER	SHIPBUILDING CONTRACTOR S/P	ON HD
NUMBER	BY: M.E. & M.E. (CIVIL)	DATE: 2000
CLASS	UNRESTRICTED AREA	REV. NO: 0000
SCALE	AS SHOWN	DATE: 00/00/00
BY	DATE	BY
1:125		YSB10-02-00