

JOHAN PIONEER 2

UTILITY/STANDBY VESSEL

GENERAL DATA

LOA:	34.00m
Breath:	10.6 m
Depth / Draft:	4.95 m / 4.75m
GRT / NRT:	448 /134 tons
Registry:	Kuching
Built:	2007
Official Number:	330722
Call Sign:	9WGN5
IMO Number:	9409211
Classification:	Bureau Veritas (BV)
Bollard Pull:	30.12 tons



MAIN ENGINE / GENERATOR

Main Engine:	2 x 1000HP Cummin KTA38 MM2,1194kW 2000 bhp @ 1800 rpm.
Main Generator:	2 x Cummins 4BT3.9 - G(M) 80 kW/415V/50 Hz/1500rpm
Gear Box:	2 x Reinjes waf562L Ratio 5.947:1
Propulsion:	2 x Fixed pitch propeller
Max Speed:	Approx 9-10 knots
Consumption:	Approx. 5,000 ltrs / 24 hrs @ 85% mcr

NAVIGATION / COMMUNICATION EQUIPMENT

Radar:	Furuno Radar, Model FR1510
Echo Sounder:	Furuno FA700 Echo Sounder
GPS:	2 x Furuno 32/ GP90 GPS
Auto Pilot:	Funicas CD50
Compass:	RGC 50 Magnetic type-Daiko Keiki
Sat Phone/ Fax/	Furuno
Email Comm:	NSSL-FBB
Inmarsat C:	Furuno Model Felcom.15
SSB:	Furuno FS-2570C
AIS:	Samyung Model SI 30 AM
VHF:	2 x Furuno FM8800S 2 x portable Model STR-6000A

DECK EQUIPMENT

Towing Winch:	Single Drum Hydraulic Winch 30 tons @ 1st layer / 100 tons brake
Anchor Windlass:	1.5 tons electro hydraulic
Anchor:	2 x Stockless anchor 480 kg
Wire Rope:	Tow wire: 38 mm x 800 m

Navtex:	Furuno NX-700A
EPIRB:	KANAD MARINE
SART:	2 x ACR 9GH
PA System:	Jotron-1605

SAFETY EQUIPMENT

Fire Fighting:	Fire/GS Pump In compliance with Class requirement
Life Rafts:	2 x 15 men Self inflatable
Life Jackets:	40 units

TANK CAPACITY

Fuel Oil:	230 m ³
Fresh Water:	77 m ³
Lube Oil:	4.8 m ³
Dirty Oil:	2.4 m ³

Endurance:	Approx. 25 days
-------------------	-----------------

OTHER INFORMATION

Deck Space:	72 m ²
Deck Strength:	5 tons / m ²

ACCOMMODATION

Single Cabin:	4 units
Twin Cabin:	3 units
4 Men Cabin:	1 unit
Total:	14 men

Last updated on 06th July 2018

Particulars given herein are without warranty as to accuracy and interest parties must satisfy themselves by inspection or other means of details of the vessel.

AN NUR
MARINE SERVICES
(M) SDN BHD



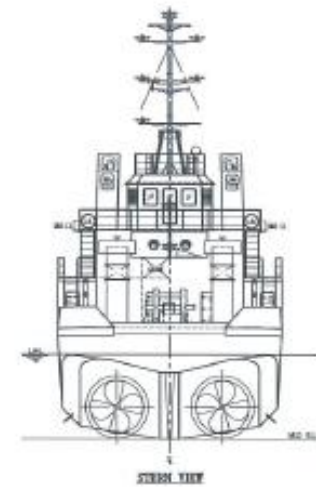
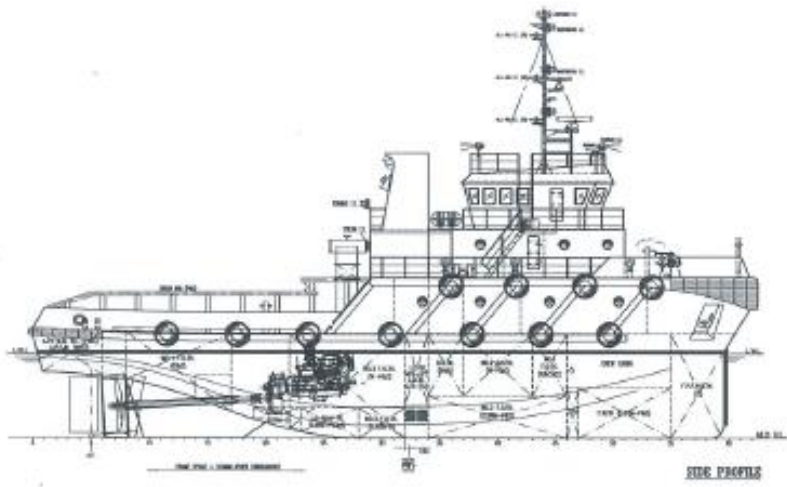
AN NUR MARINE SERVICES(M) SDN BHD

WISMA AN NUR, NO. 13A, JALAN UTAMA SURIA TROPIKA 1, SURIA TROPIKA, 43300 SERI KEMBANGAN, SELANGOR DARUL EHSAN, MALAYSIA.

TEL: +60389385111 / FAX: +60389389393 / EMAIL: info@annurmarine.com

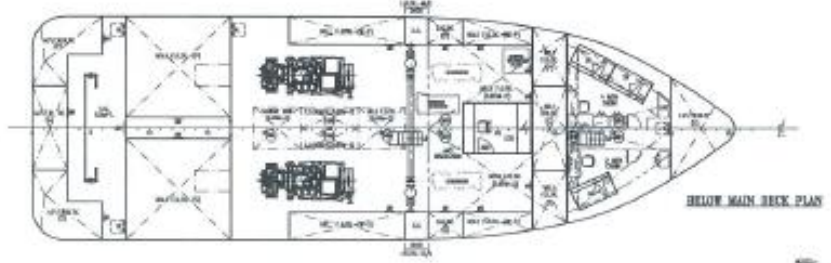
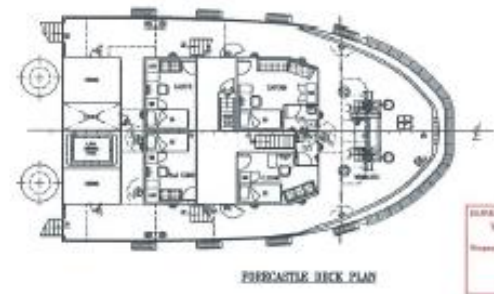
GENERAL ARRANGEMENT

JOHAN PIONEER 2



PRINCIPAL PARTICULARS

LENGTH O.A.	34.00M [111.52FT]
LENGTH S.P.	30.00M [98.42FT]
BREADTH M.L.	10.00M [32.79FT]
DEPTH M.O.	4.55M [14.92FT]
BEAM DECK	4.00M [13.12FT]
COMPLEMENT	14 MEN
T/D CAPACITY	310 TONNES
T/A CAPACITY	14 TONNES
E/A CAPACITY	26 TONNES
MAIN ENGINE	CUMMINS K14M 1000HP/1800RPM + 2 UNITS
SEA RCL	NAFO 6.0/1
GENERATOR	140 KW + 2 UNITS
BARBERIS GENERATOR	50 KW + 1 UNIT
ROTATION	UNRESTRICTED AREA
PORT OF REGISTRY	KUWAIT
TUG	MAYTON



BUREAU VERITAS *Classification* **344M**
VU avec observation
 Issuance: 20-Nov-2015
 010000000000
 The ship operates under

SEE TECHNICAL COMMENT SHEET(S)

FOR APPROVAL

DESIGN	ARMED & FIT EQUIPPED VESSEL	A	100
DATE	05-NOV-2015	REV	1
UNITED SHIP DESIGN (NAVAL ARCHITECTS)			
801, 103 PANGLOSS AVENUE, FL 33409 GAITHERSBURG, MARYLAND TEL: +1-410-283-1200, FAX: +1-410-283-1201 WWW: www.usdshipdesign.com			
M.V. JOHAN PIONEER 2 344M UTILITY VESSEL			
GENERAL ARRANGEMENT			
DESIGN	UNITED SHIP DESIGN INC	SCALE	
CONSTRUCTION	UNSPECIFIED	DATE	
CLASS		REG. NO.	
OWNER	UNSPECIFIED	REG. OFF.	
OPERATOR	UNSPECIFIED	REG. NO.	
REGISTRY	UNSPECIFIED	REG. NO.	

NOTES:

1. GENERAL ARRANGEMENT AND DIMENSIONS SHOWN IS AS SHOWN IN THIS GENERAL ARRANGEMENT.
2. ALL DIMENSIONS ARE TO UNLESS OTHERWISE SPECIFIED.
3. ALL DIMENSIONS ARE TO UNLESS OTHERWISE SPECIFIED.
4. ALL DIMENSIONS ARE TO UNLESS OTHERWISE SPECIFIED.
5. ALL DIMENSIONS ARE TO UNLESS OTHERWISE SPECIFIED.
6. ALL DIMENSIONS ARE TO UNLESS OTHERWISE SPECIFIED.
7. ALL DIMENSIONS ARE TO UNLESS OTHERWISE SPECIFIED.
8. ALL DIMENSIONS ARE TO UNLESS OTHERWISE SPECIFIED.
9. ALL DIMENSIONS ARE TO UNLESS OTHERWISE SPECIFIED.
10. ALL DIMENSIONS ARE TO UNLESS OTHERWISE SPECIFIED.

05-NOV-2015
 10:00 AM
 10:00 AM
 10:00 AM